



A Caterpillar Brand

**THE PERFORMANCE
YOU NEED.
THE SUPPORT
YOU EXPECT**





THE PERFORMANCE YOU NEED. THE SUPPORT YOU EXPECT.

As part of our commitment to our growing customer base worldwide, Caterpillar is proud to serve utility customers through our SEM brand. Formerly Shandong SEM Machinery Co., Ltd, Caterpillar (Qingzhou) Ltd. (CQL) offers both SEM and Cat branded products.

We're committed to continually expanding our offerings and improving the quality of our products. We focus on research and development and follow the Caterpillar Production System and advanced management philosophies to safely, efficiently and profitably manufacture products. We have recently acquired additional property to expand capacity of our CQL lines as well as other key components. SEM equipment is targeted at utility customers for Chinese domestic and select growth markets around the world. SEM products meet or exceed

regional industry requirements for quality and reliability and target customers who emphasize initial acquisition cost over long-term total cost of ownership. We have a well-established distribution network in more than 80 countries, including the following regions: Southeast Asia, Africa and Middle East, Russia and Eurasia countries, and Latin and Central America.



TIMELINE: A HISTORY OF GROWTH

1958	1976	1985-1990	2003	2008	2009	2010	2011	2013	2016
SEM founded in Qingzhou	First countershaft wheel loader in China, JZ425, launched	SEM assembly, machining and parts painting facilities established	Caterpillar / SEM Joint Venture established	SEM fully acquired by Caterpillar	First Global SEM Dealer Conference held in Beijing, with participation from dealers representing 14 countries	First SEM Soil Compactor launched	First SEM Motor Grader and Landfill Compactor launched; more than 1,500 machines exported for first time	Shandong SEM Machinery, Ltd. becomes Caterpillar (Qingzhou) Ltd.	SEM brand becomes a Caterpillar brand

WHEEL LOADERS

A MODEL FOR EVERY APPLICATION

SEM Wheel Loaders have been manufactured in China for nearly 60 years. We offer compact, small and midsize loaders to meet the needs of every application. Our SEM 66X Series Wheel Loaders are designed for heavy working conditions and higher load capacities. SEM 65X Series Wheel Loaders feature low-speed engines for increased efficiency and a number of productivityenhancing features. The SEM 63X Series Wheel Loaders are the ideal choice for light working conditions, with an enlarged bucket and improved dump height for a 10 percent boost in productivity. SEM 61X Series Wheel Loaders features 10% higher dump clearance than others and provides various work tools through quick coupler.

MODEL	BUCKET CAPACITY (m³)	RATED POWER (kW)
SEM616B	0.9	55
SEM618B	1.0	60
SEM630B	1.53	92
SEM636B	1.7	92
SEM638	1.53	92
SEM639B	1.7	92
SEM639C	1.7	97
SEM652B	2.7	162
SEM655D	3.0	162
SEM656D	3.0	162
SEM658C	3.0	162
SEM659C	3.0	162
SEM660B	3.5	178
SEM660D	4.0	178
SEM668C	3.5	175
SEM669C	3.5	175



Fuel Economy

- Low speed engine with E-fan improves fuel consumption by 8-15%
- Single load sensing hydraulic system— 8-10% better fuel efficiency

Safety

- 3-point touching design provides convenient operator entering to cabin
- Back alarm and beacon ensure machine operation safety
- Great visibility during operation
- ROPS & FOPS cab option

Productivity

- Performance Series Bucket – High Full fill factor-110%
- Offered high and low speed gears, high efficiency for medium and long distance transport
- The advanced Single load sensing flow sharing hydraulic system improves efficiency

Serviceability

- System pressure test ports as standard
- Centralized lubrication points reduce maintenance time

Comfort

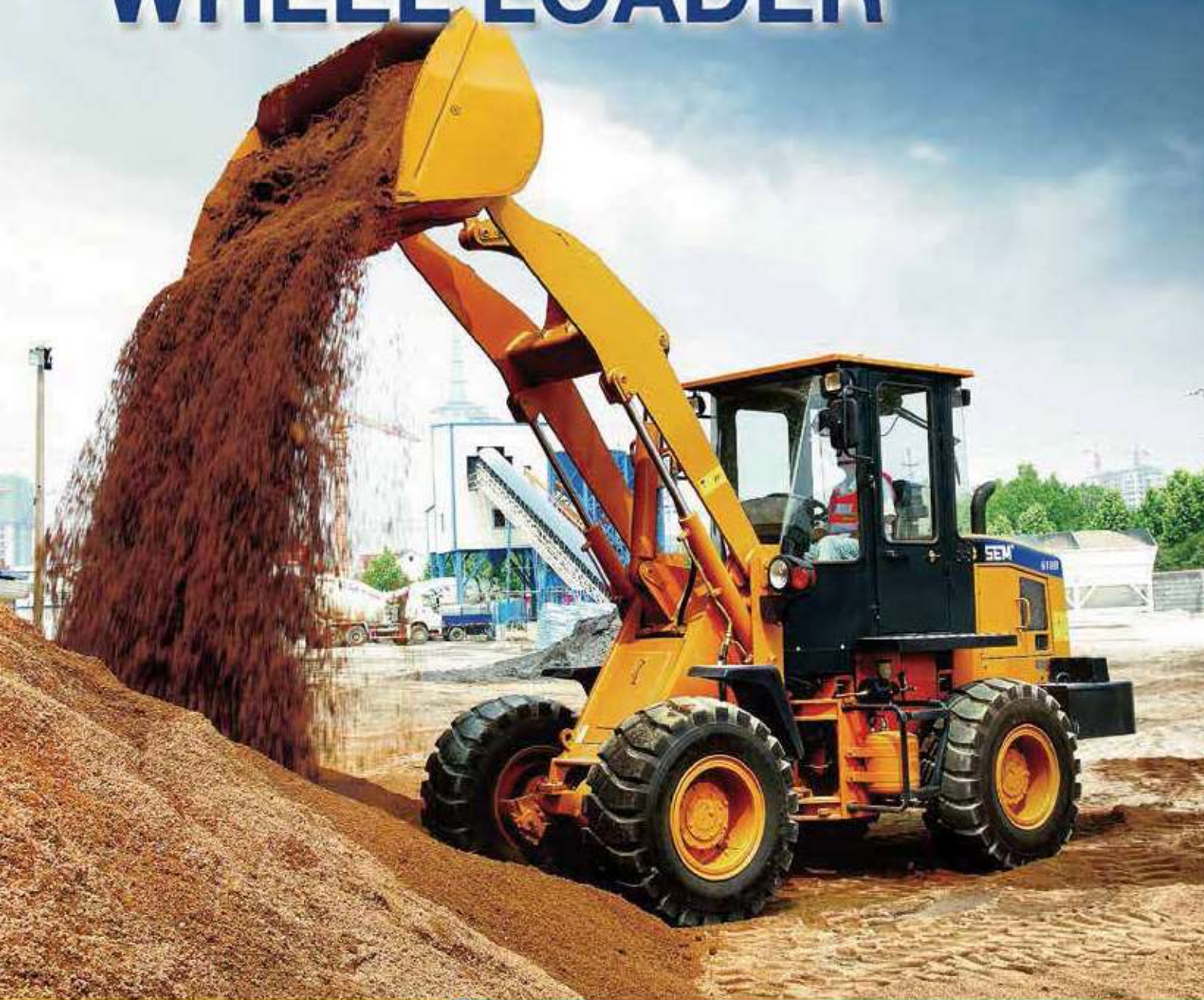
- Premium operator station provides increased space and superior visibility
- Slid window and fresh air ventilation deliver better operation environment
- Adjustable suspension seat

Reliability

- Countershaft transmission with upgraded core components provides high reliability
- World class standard piston pump delivers longer service life
- New air filtration system ensure engine life



SEM618B WHEEL LOADER



SEM618B Wheel Loader

Main Specifications

- Rated Load Capacity 1,800 kg
- Operating Weight 5,780 kg
- Bucket Capacities 1.0 m³
- Overall Dimensions L*W*H* (mm) 5885×2000×2795

Engine

- Rated Gross Power 60 kW
- Model Yituo YT4B4
- Peak Torque 320 N.m

Operating Specifications

- Max. Rimpull 55 kN
- Breakout Force 60 kN
- Full Turn Static Tipping Load 3600 kg

Hydraulic System

- Pump Displacement-Implement Pump 63 ml/rev
- System Pressure Setting 17 MPa
- Hydraulic Cycle Times :
 - Raise 4.37 s
 - Dump 0.75 s
 - Lower (Empty, Float Down) 2.73 s
 - Total 7.9s

Steering

- Steering Angle Left/Right 35°±1°
- Minimum Turning Radius Over Rear Tire 4229 mm
- Minimum Turning Radius Over Bucket 4980 mm

Axle

- Rear-Oscillating ± 12°

Brake System

- Service Brake Dry & Caliper, Air-to-Oil Control
- Parking Brake Drum-Type Shoe Brake

Transmission

- Type Countershaft Power Shift
- Travel Speed: I II
- Forward 9.3 km/hr 23.8 km/hr
- Reverse 9.1 km/hr 23.5 km/hr

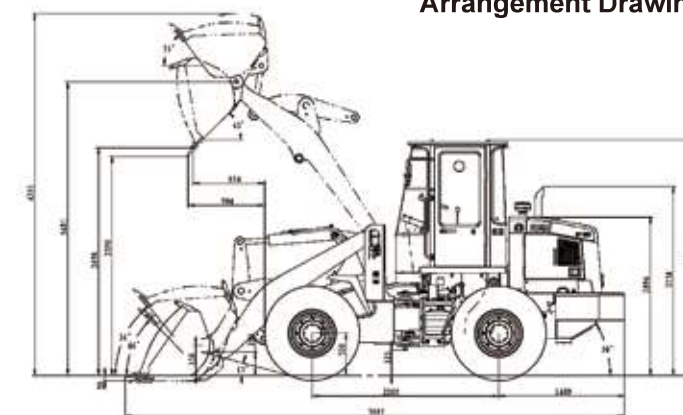
Service Refill Capacities

- Cooling System 20 L
- Engine Lubricating Oil 12 L
- Oil for Converter and Gear Box 21 L
- Differentials and Final Drives:
 - Front 8 L
 - Rear 8 L
- Hydraulic Tank 50 L

Tires

- Size 16/70-20
- Type Bias
- Layers 14
- Textured Type L3
- Air Pressure Front 0.28 MPa/Rear 0.21 MPa

Arrangement Drawing



DEALER NAME

Caterpillar (Qingzhou) Ltd. Address: No.12999 Nanhuan Road, Caterpillar Industrial Park, Qingzhou City, Shandong Province, Zip Code: 262500 P.R.China

© Materials and specifications are subject to change without notice. Featured machines in photos may include optional equipment. See your SEM dealer for available options.

© 2016 Caterpillar (Qingzhou) Ltd, All Rights Reserved, SEM Machinery, SEM, their respective logos, trade dress as well as corporate and product identity used herein, are trademarks of Caterpillar (Qingzhou) Ltd, and may not be used without permission.
Version: September 2016

Website <http://www.semmachinery.com>



SEM636D Wheel Loader



SEM636D

Product Advantage

- High Productivity
- Best-in-class Reliability and Durability
- Excellent Fuel Economy
- Outstanding Operator Comfort

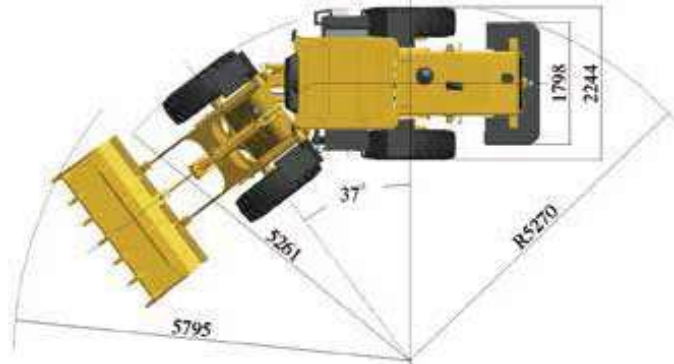
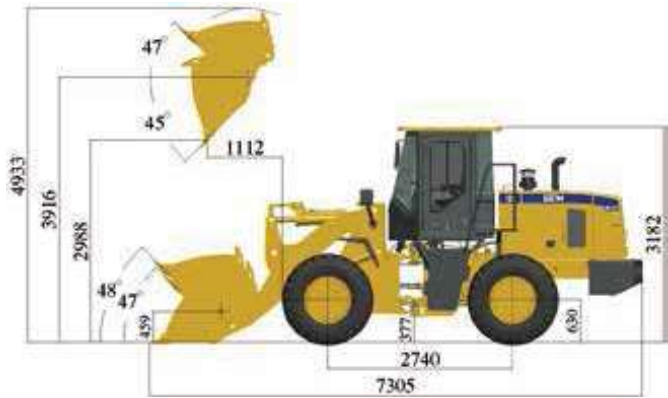
Website <http://www.semmachinery.com>



Main Specifications

Items		SEM636D	Items		SEM636D
Main Specifications			Engine		
Rated Load	kg	3000	Model		Weichai WP6G125E22
Operating Weight with Standard Bucket	kg	9900	Rated Power	kW	92
Bucket Capacity	m³	1.5-2.5	Rated Speed	r/min	2200
Wheel Base	mm	2740	Displacement	L	6.754
Overall Dimension	mm	7305*2354*3182	Implement Hydraulic		
Operating Specifications			Implement System Type		Gear pump
Breakout Force	KN	113	Boom Raise Time	s	4.65
Dump Clearance	mm	2988	Hydraulic Cycle Time	s	8.34
Articulated Angle		37±1	System Presure Setting	Mpa	18
Transmission			Brake System		
Transmission Type		Countershaft,power shift	Service Brake		Dry&caliper,air to oil control
Transmission Gears		F4/R2	Parking Brake		"Drum type shoe brake, spring applied & oil released"
Torque Converter Type		Single stage 3 elements	Steering System		
Maker & Type		SEM TR100	System Type		Shared Flow
Forward I/Reverse I		7.9/9.7	Steering PumpType	Mpa	Gear pump
Forward II/Reverse II		14/31	System Presure Setting		14
Forward III/Reverse III		25/NA	Steering Angle (L/R)		37±1
Forward IV/Reverse IV		39/NA	Tires		
Axle			Size		17.5-25
Main Drive Type		Spiral bevel gear,single stage	Type		PR
Final Drive Reduction Type		Planetary type,single stage	Layer		12
Rear - Oscillating +/-		±12	Txtured Type		L-3

Machine Dimensions



► Note: the above dimensions are based on the standard configuration.

SEM656D Wheel Loader



※ Featured machines in photos may include optional equipment

SEM656D

Product Advantage

- High Productivity
- Excellent Fuel Economy
- Best-in-class Reliability and Durability
- Outstanding Operator Comfort

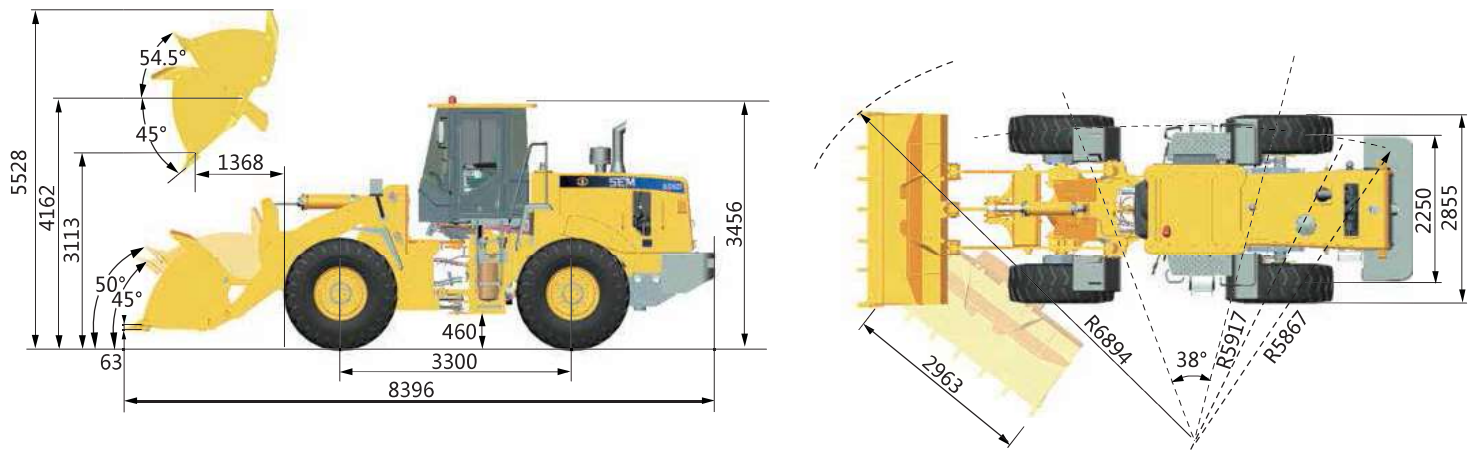
Website <http://www.semmachinery.com>



Main Specifications

Items		SEM656D	Items		SEM656D
Main Specifications			Engine		
Rated Load	kg	5 000	Model		WD10
Operating Weight with Standard Bucket	kg	17 100	Rated Power	kW	162
Bucket Capacity	m ³	2.7-4.5	Rated Speed	r/min	2 000
Wheel Base	mm	3 300	Displacement	L	9.726
Overall Dimension (outside of tire)	mm	8 396x2 963x3 456	Implement Hydraulic		
Operating Specifications			Implement System Type		Single load sensing flow sharing system
Breakout Force (GRD)	kN	173	Boom Raise Time	s	5.13
Dump Clearance	mm	3 113	Hydraulic Cycle Time (rated payload)	s	9.3
Articulated Angle	°	38±1	System Pressure Setting	Mpa	18
Transmission			Brake System		
Transmission Type		Countershaft, power shift	Service Brake		Dry & caliper, air to oil control
Transmission Gears		F4/R4	Parking Brake		Drum type shoe brake, spring applied & oil released
Torque Converter Type		Sigle stage 3 elements	Steering System		
Maker & Type		TR200	System Type		Flow amplifying
Forward I/ Reverse I	km/h	8.6/8.6	Steering Pump Type		Piston pump
Forward II/ Reverse II	km/h	16/16	System Pressure Setting	Mpa	16
Forward III/ Reverse III	km/h	25/25	Steering Angle (L/R)	°	38±1
Forward IV/ Reverse IV	km/h	43/43	Tires		
Axle			Size		23.5-25
Main Drive Type		Spiral bevel gear, single stage	Type		Bias
Final Drive Reduction Type		Planetary type, singe stage	Layer		16
Rear - Oscillating +/-	°	±11	Textured Type		L3

Machine Dimensions



► Note: the above dimensions are based on the standard configuration.

Caterpillar (Qingzhou) Ltd.

Materials and specifications are subject to change without notice. Featured machines in photos may include optional equipment. See your SEM dealer for available options.

© 2015 Caterpillar (Qingzhou) Ltd. SEM, its respective logos, trade dress as well as corporate and product identity used herein, are trademarks of Caterpillar (Qingzhou) Ltd. and may not be used without permission. All rights are reserved.

DEALER NAME

Address:
Telephone:
Fax:
Email:
Website:

Dealer Logo Area

SEM660D Wheel Loader



SEM660D

Product Advantages

- Excellent Fuel Economy
- Best-in-class Reliability and Durability
- High Productivity
- Outstanding Operation Comfort

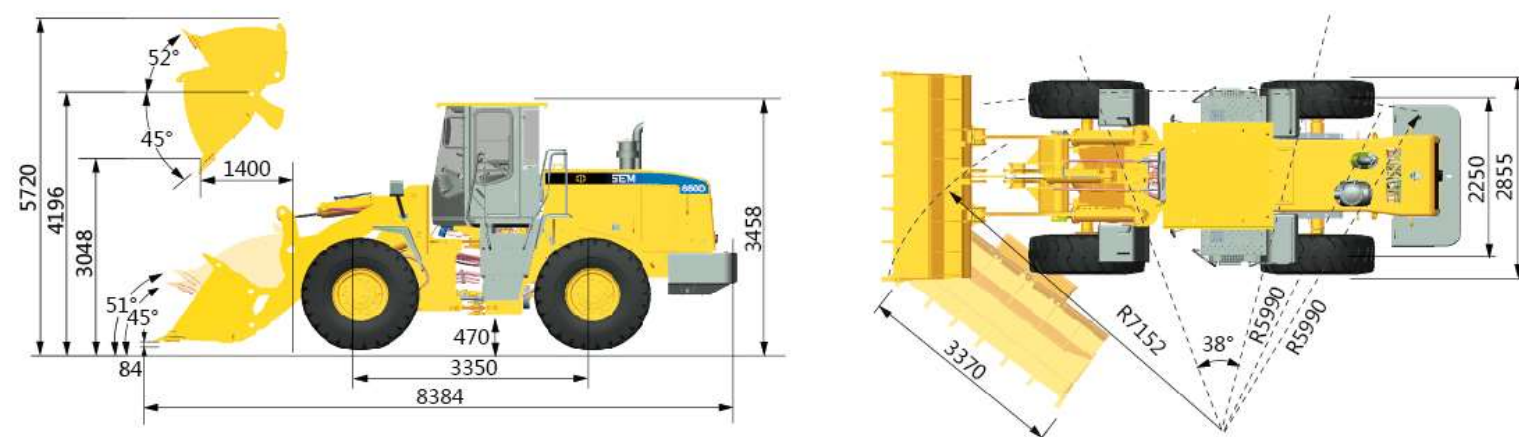
Website <http://www.semmachinery.com>



Main Specifications

Items		SEM660D	Items		SEM660D
Main Specifications			Engine		
Rated Load	kg	6 000	Model		WP10G240E343
Operating Weight with Standard Bucket	kg	20 000	Rated Power	kW	178
Bucket Capacity	m³	3.3-5.5	Rated Speed	r/min	2 000
Wheel Base	mm	3 350	Displacement	L	9.726
Overall Dimension (outside of tire)	mm	8 384×3 370×3 458	Implement Hydraulic		
Operating Specifications			Implement System Type		Single load sensing flow sharing system
Breakout Force (GRD)	kN	183	Boom Raise Time	s	5.3
Dump Clearance	mm	3 048	Hydraulic Cycle Time (rated payload)	s	9.7
Articulated Angle	°	38±1	System Presure Setting	Mpa	18
Transmission			Brake System		
Transmission Type		Countershaft, power shift	Service Brake		Dry & caliper, air to oil control
Transmission Gears		F4/R4	Parking Brake		Drum type shoe brake, spring applied & oil released
Torque Converter Type		Single stage 3 elements	Steering System		
Maker & Type		TR200	System Type		Flow amplifying
Forward I/ Reverse I	km/h	7.4/7.4	Steering Pump Type		Piston pump
Forward II/ Reverse II	km/h	14/14	System Presure Setting	Mpa	18
Forward III/ Reverse III	km/h	22/22	Steering Angle (I/R)	°	38±1
Forward IV/ Reverse IV	km/h	38/38	Tires		
Axle			Size		23.5-25
Main Drive Type		Spiral bevel gear, single stage	Type		Bias
Final Drive Reduction Type		Planetary type, single stage	Layer		20
Rear - Oscillating +/-	°	±11	Textured Type		L3/E3

Machine Dimensions



► Note: the above dimensions are based on the standard configuration.

Caterpillar (Qingzhou) Ltd.

Materials and specifications are subject to change without notice. Featured machines in photos may include optional equipment. See your SEM dealer for available options.

© 2016 Caterpillar (Qingzhou) Ltd. SEM, its respective logos, trade dress as well as corporate and product identity used herein, are trademarks of Caterpillar (Qingzhou) Ltd. and may not be used without permission. All rights are reserved.

Version: February 2016

DEALER NAME

Address:
Telephone:
Fax:
Email:
Website:

Dealer Logo Area

MOTOR GRADERS

EXCEPTIONAL COMFORT AND PRODUCTIVITY

SEM Motor Graders feature a large cab mounted on the front frame for an exceptional view to the blade and front axle even during articulation. With a height of 1.9 meters, the cab is about 30 percent larger than competitive models, for exceptional operator comfort and productivity. A 7-position link bar with electric over hydraulic controls allows ease of operation from within the cab, and optimum blade reach capability improves productivity. A standard blade float function allows the blade to lower without hydraulic pressure for increased versatility. Maximum strength and durability are delivered by the A-frame tubular design drawbar, a flanged box section that removes welds from high-stress areas, and continuous top and bottom plate construction.

MODEL	OPERATION WEIGHT (kg)	RATED POWER (kW)
SEM919	15130	140
SEM921	15930	162
SEM922 AWD	16550	162



Productivity

- Load Sensing hydraulic system provides consistent and precise blade movement
- 7-hole link bar provides best in class blade positioning
- SEM922 with AWD provides improved traction

Safety

- Cab mounted on front frame for best in class visibility
- Handrails and non-skid steps for three points of contact
- Optional ROPS cab available for regional requirements

Operation cost

- Load sensing hydraulics reduce system heat and fuel consumption
- Hydraulically driven fan reduces fuel consumption
- SEM tandem axle with longer maintenance and service interval reduce the maintenance and labor cost

Serviceability

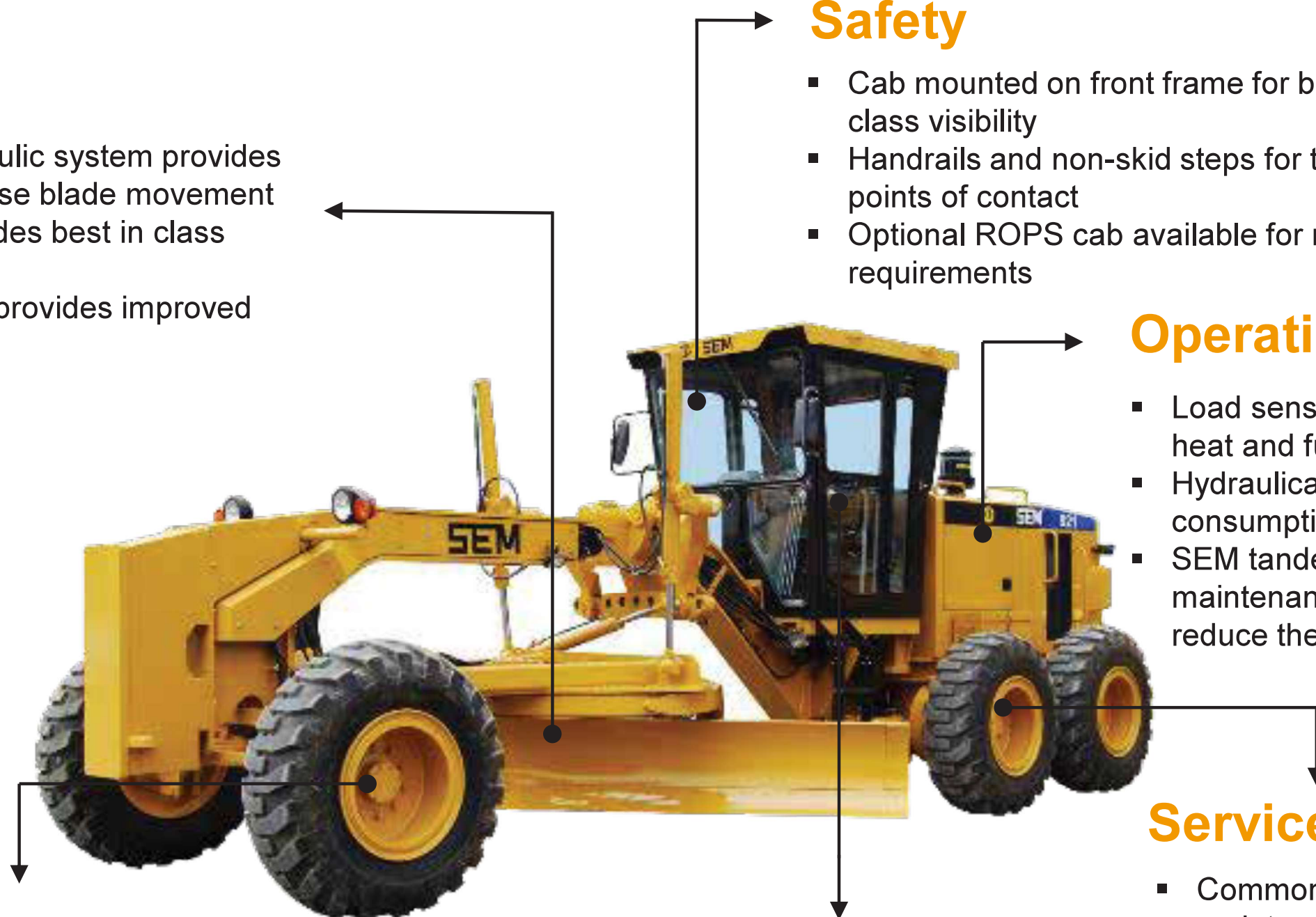
- Common components for reduced maintenance & repair
- Good access to grease points and filters for lower service costs
- Adjustment free drive chain and grease free SEM tandem axle for improved maintenance and serviceability

Reliability

- Leading in class in house made SEM tandem axle
- Box style front frame provides rigid and durable structure
- A-frame designed drawbar provides strength in all blade positions

Comfort

- World Class industry control layout with low lever efforts for reduced operator fatigue
- Large cab with telescoping controls for increased operator comfort



SEM919/921/922 AWD Motor Grader



※ Featured machines in photos may include optional equipment

SEM919
SEM921
SEM922AWD

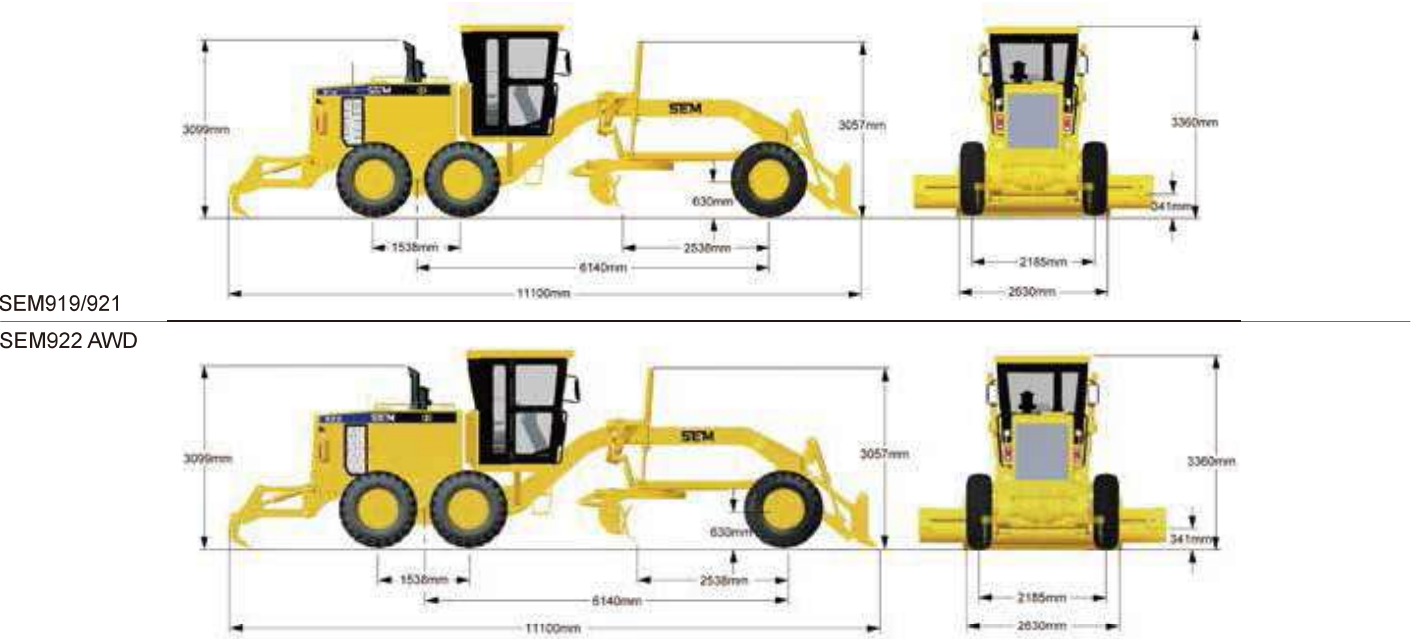
Product Advantage

- **High Productivity:** Load sensing hydraulic system provides consistent and precise blade movement
- **High Reliability:** A-frame designed drawbar provides strength in all blade positions
- **Comfort:** World Class industry control layout with low lever efforts for reduced operator fatigue

Specifications

Items	SEM919	SEM921	SEM922AWD
Operation Weight (Base Machine)	15,070kg	15,930kg	18,120kg
Overall Dimensions (L*W*H)	8,703*2,630*3,360mm	8,854*2,630*3,360mm	10,324*2,728*3,360mm
Blade Length (L*W*H)	3,974*25*607mm	4,279*25*607mm	4,279*25*607mm
Max. Lifting Height	475mm	475mm	475mm
Max. Depth of Cut	715mm	715mm	715mm
Max. Drawbar	≥78kN	≥85kN	Front≥26kN Rear Axle≥86kN
Wheelbase	6,140mm	6,140mm	6,140mm
Frame Articulation Angle	20°	20°	20°
Min. Turning Radius	7.8m	7.8m	7.8m
Engine Brand	SDEC SC8D190.1G2	SDEC SC9D220G2	SDEC SC9D220G2
Rated power	140kW	162kW	162kW
Transmission Type	Hangchi 6WG180	Hangchi 6WG180	Hangchi 6WG180
Travel Speed (Forward/Rear)	40/25km/h	40/25km/h	40/25km/h
Rear Axle/Tandem	SEM ST22	SEM ST22	SEM ST22
Service brake	Outboard disc with brake caliper,Air to oil Control	Outboard disc with brake caliper,Air to oil Control	Outboard disc with brake caliper,Air to oil Control
Oscillation (Front up/Rear up)	15/25°	15/25°	15/25°
Max. Oscillation Angle	±16°	±16°	±16°
Steering Angle (Left/Right)	47.5°	47.5°	47.5°
Max. Lean Angle of Front Wheels	18°	18°	18°
Hydraulic System	Load sensing,PPPC	Load sensing,PPPC	Load sensing,PPPC

Dimensions



Caterpillar (Qingzhou) Ltd. Address: No.12999 Nanhuan Road,Caterpillar Industrial Park, Qingzhou City,Shandong Province, Zip Code: 262500 P.R.China
© Materials and specifications are subject to change without notice. Featured machines in photos may include optional equipment. See your SEM dealer for available options.
© 2016 Caterpillar (Qingzhou) Ltd. All Rights Reserved. SEM Machinery, SEM, their respective logos, trade dress as well as corporate and product identity used herein, are trademarks of Caterpillar (Qingzhou) Ltd. and may not be used without permission.
Version: November 2016

Website <http://www.semmachinery.com>



TRACK-TYPE TRACTORS

MODEL	OPERATION WEIGHT (kg)	FLYWHEEL ENGINE POWER (kW/hp)
SEM816	17230	120/160
SEM816 LGP	19720	120/160
SEM822	23680	162/220
SEM822 LGP	25400	162/220
SEM822 WH	28500	162/220

HIGH EFFICIENCY AND RELIABILITY

As a product brand of Caterpillar, SEM is able to leverage over 100 years of Caterpillar technology and design experience to provide a series of track-type tractors that meet the needs of a variety of applications. The hydrostatic system on all models delivers higher efficiency and maximum output traction force. The world-class undercarriage ensures high reliability and resistance to wear, and the planetary final drive design delivers increased torque ratio for higher transmission efficiency and lower maintenance costs. Joystick controls provide comfortable, precise blade operation. Advanced structure welding techniques and stress analysis ensure durability and long life.



Comfort

- Pilot control with low lever efforts to reduce operator fatigue
- Single joystick with multi-function controls all travel movements, reduces operator fatigue
- Low noise level cab and 10% larger space provides best in class operator environment

Safety

- Emergency parking break and working system lock function,
- Handrails and non-skid steps for three points contact
- More lights in front and rear provides better visibility at night
- ROPS & FOPS cab option

Productivity

- Automatic, dual-path, electronic control hydrostatic transmission provides infinite speed, counter-rotation, smooth travel control
- World class hydraulic pump and motor provides larger draw bar pull
- Optimized work tool design provides higher productivity

Reliability

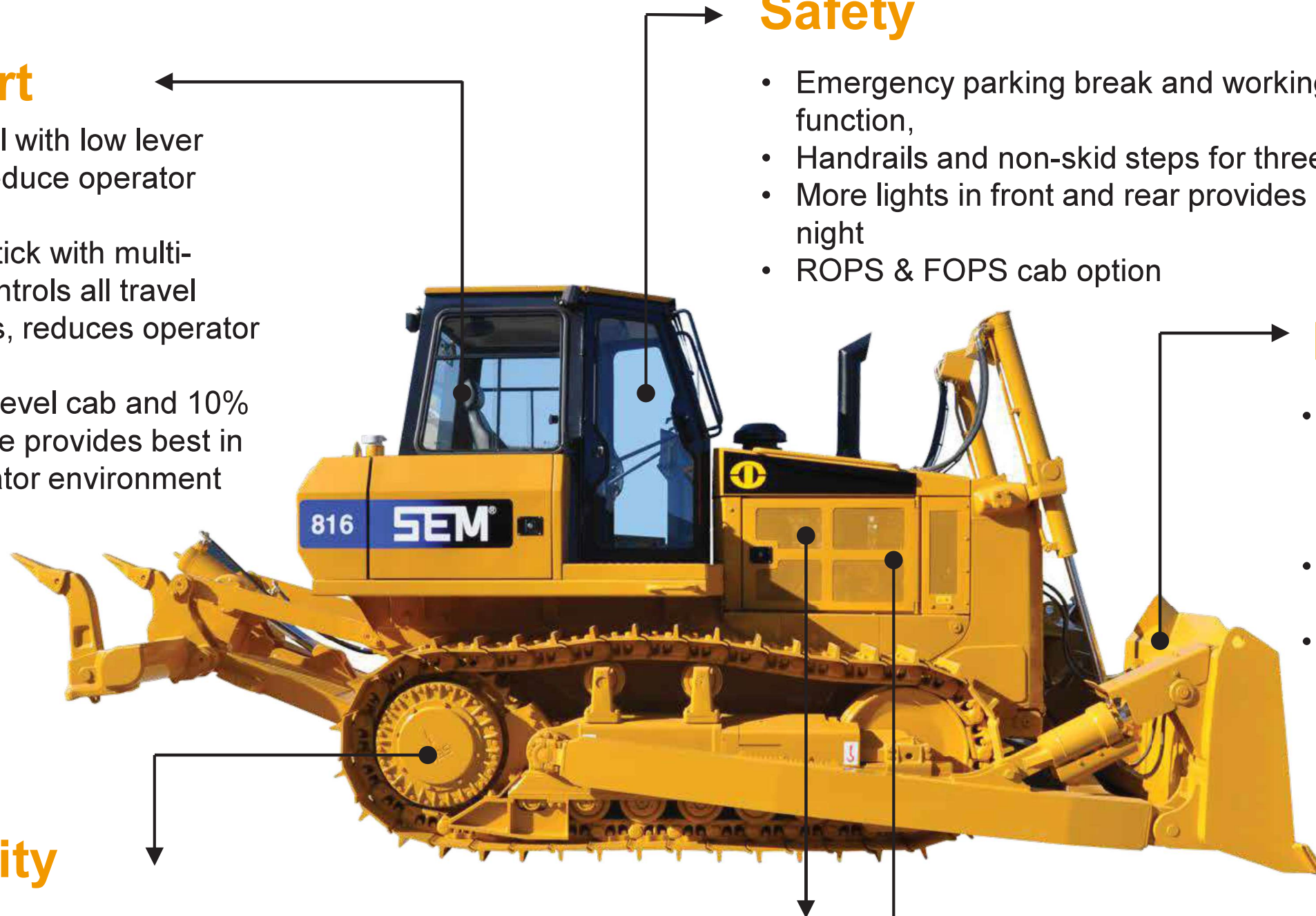
- Best in class hydraulic components provides improved up time
- World Class undercarriage components delivery quality
- Cummins engine option for SEM822

Serviceability

- Maintenance-free undercarriage components reduce maintenance intervals and cost
- Instrument panel with 3 stage indicator and warning function for all working conditions

Fuel Economy

- Load sensing hydraulics reduce system heat and fuel consumption
- Close center drivetrain system reduces fuel consumption
- Deceleration & Brake Pedal decrease engine rotation to save fuel when breaking



SEM816/822

Track Type Tractor



※ Featured machines in photos may include optional equipment

SEM816

SEM822

Efficient: The electronically controlled hydrostatic drive system and multi functional joystick provide high levels of performance and maneuverability.

Comfortable Operation: The cabin is ergonomically designed for increased operator comfort and visibility. The advanced monitoring system tracks machine operating conditions and keeps the operator informed of all vital machines functions.

Reliable: The proven hydrostat design along with world class pump and motors provide a highly reliable tractor. The undercarriage components are designed for longer life versus the leading competitor.

Serviceability: The SEM tractors are designed for easy access to reduce overall maintenance time. The machines electronic control model allows for quick troubleshooting.

Website <http://www.semmachinery.com>



Main Specification for SEM816 & SEM822

Model	SEM816	SEM816LGP	SEM822	SEM822LGP
Operating Weight	17,230 kg	19,720 kg	23,680 kg	25,400 kg
Ground Pressure	68 kPa	31.5 kPa	70 kPa	39 kPa
Ground Clearance	410 mm	435 mm	394 mm	394 mm
Max.Slope	30°	30°	30°	30°
Engine				
Model	Weichai WD10G178E25	Weichai WD10G178E25	Weichai WD12G240E26	Weichai WD12G240E26
Flywheel Power	120 kW / 160 hp	120 kW / 160 hp	162 kW / 220 hp	162 kW / 220 hp
Working Tool				
Blade Type	SU (S Blade is Option)	S	SU (U Blade is Option)	S
Blade Capacity	4.3 m ³ (S 3.4 m ³)	3.4 m ³	6.4 m ³ (U 7.5 m ³)	5.5 m ³
Blade Width	3,140 mm (S 3,490mm)	4,227 mm	3,720 mm (U 4,015 mm)	4,617 mm
Blade height	1,240mm (S 1,165mm)	1,000mm	1,511 mm (U 1,420 mm)	1,345 mm
Max. Blade Digging Depth	430 mm	470 mm	563 mm	600 mm
Max. Blade Lift Ground Clearance	1,041 mm	1,055 mm	1,140 mm	1,165 mm
Max.Output Rimpull	280 kN	280 kN	350 kN	350 kN
Maximum Digging Depth Of Ripper	584 mm	N/A	650 mm	N/A
Maximum Clearance Under Tip	615 mm	N/A	640 mm	N/A
Powertrain				
Type	Electronic control, Dual-path, Hydrostatic Drive		Electronic control, Dual-path, Hydrostatic Drive	
Travel Speed- F/R	0 - 10 km/hr (Infinitely Variable Speed Control)		0 - 11.5 km/hr (Infinitely Variable Speed Control)	
Steering & Brake	Hydrostatic Steering, Wet, Multiple-Disc Brakes		Hydrostatic Steering, Wet, Multiple-Disc Brakes	
Minimum Streeing Radius	3610 mm (Counter-rotated available)	3,740 mm (Counter-rotated available)	4,225 mm (Counter-rotated available)	4,300 mm (Counter-rotated available)
Undercarrige				
Track Shoe Width	510 mm	1,050 mm	560 mm	915 mm
Track Shoe Quantity	37 piece	42 piece	40 piece	45 piece
Length Of Track On Ground	2,430 mm	2,925 mm	2,948 mm	3,488 mm
Track Gauge	1,880 mm	2,300 mm	2,000 mm	2,340 mm
Track Roller Quantity	6/Side	7/Side	7/Side	8/Side
Carrier Roller Quantity	2/Side	2/Side	2/Side	2/Side
Hydraulic System				
Type	Pilot Control	Pilot Control	Pilot Control	Pilot Control
Implement Hydraulic System Pressure	19 Mpa	19 Mpa	19 Mpa	19 Mpa
Service Refill Capacities				
Cooling system	45 L	45 L	45 L	45 L
Hydrostatic Oil	40 L	40 L	62 L	62 L
Implement Oil	60 L	60 L	110 L	110 L
Fuel	320 L	320 L	460 L	460 L
Pivot Shaft Case (each side)	1.2 L	1.2 L	0.8 L	0.8 L

Optional Accessories

S =Standard, O =Optional, - =#N/A	816	816 LGP	822 STD	822 LGP
WDEC (Tier II)	S	S	S	S
SU Blade*	S	-	S	-
S Blade*	S	S	S	S
SG Shoe	S	O	S	O
APEX Shoe	-	S	-	S
Carrier Roller	S	S	S	S
Track Roller (One Side 7 units)	S	-	S	-
Track Roller (One Side 8 units)	-	S	-	S
Hystat Powertrain	S	S	S	S
Normal Start (>=-20°C)	S	S	S	S
STD Cab	S	S	S	S
Drawbar	S	S	S	S
Cab Heater	O	O	O	O
Cab HVAC	O	O	O	O
Cold Start	O	O	O	O
Cold Weather Oil	O	O	O	O
Artic Oil	O	O	O	O
Rear Ripper w/3 Teeth	O	-	O	-
ROPS & FOPS	O	O	O	O

*Must Select either S Blade or SU Blade

Caterpillar (Qingzhou) Ltd.

Materials and specifications are subject to change without notice. Featured machines in photos may include optional equipment. See your SEM dealer for available options.

© 2015 Caterpillar (Qingzhou) Ltd. All Rights Reserved. SEM Machinery, SEM, their respective logos, trade dress as well as corporate and product identity used herein, are trademarks of Caterpillar (Qingzhou) Ltd. and may not be used without permission.

DEALER NAME

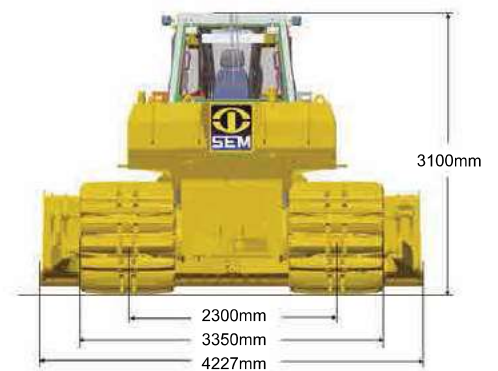
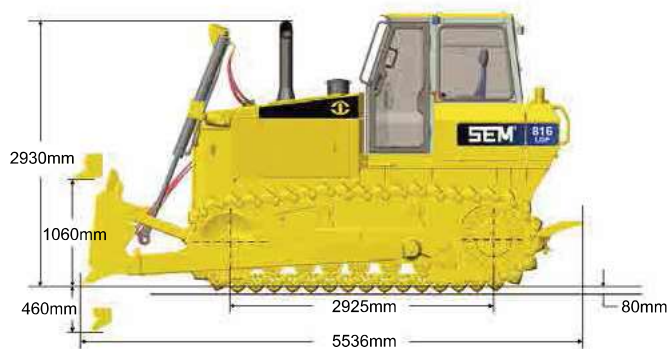
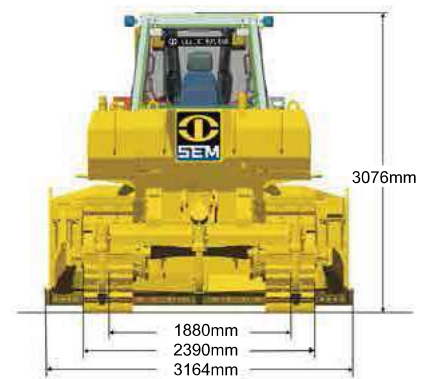
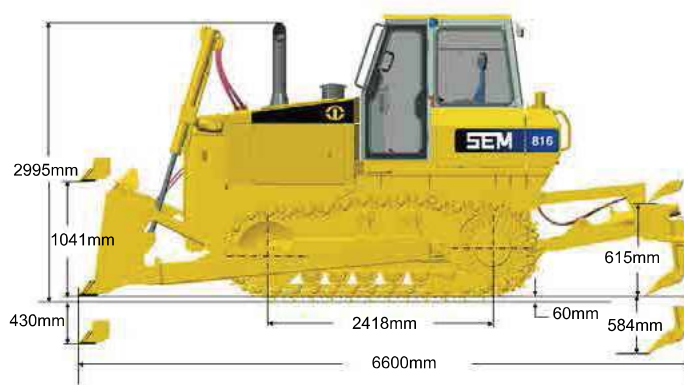
Address:
Telephone:
Fax:
Email:
Website:

Dealer Logo Area

Dimensions

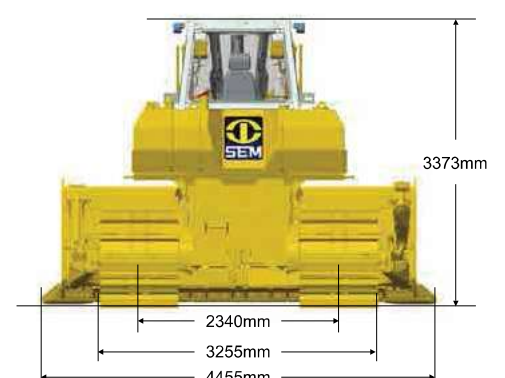
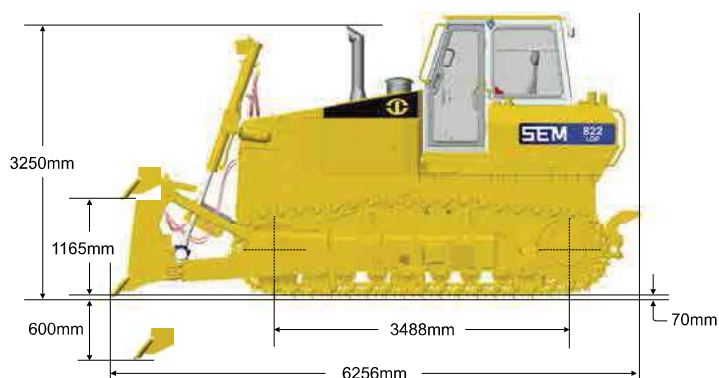
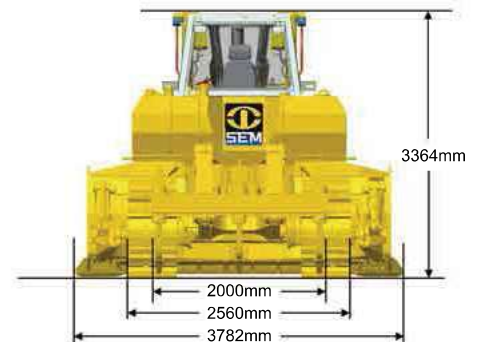
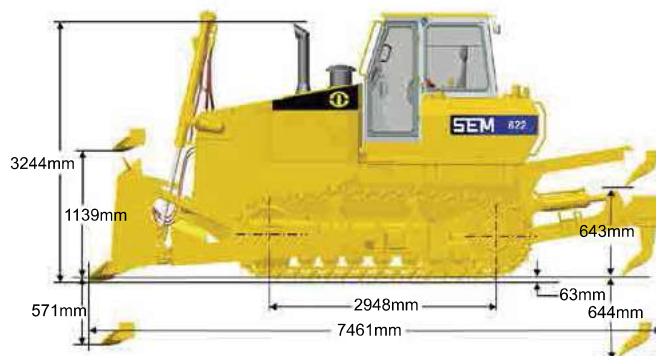
SEM816

SEM816LGP



SEM822

SEM822LGP



SOIL COMPACTORS

MODEL	OPERATION WEIGHT (kg)	RATED POWER (kW)
SEM518	18000	129
SEM520	20000	129
SEM522	22000	140

HIGH PERFORMANCE AND VERSATILITY

SEM Soil Compactors are essential tools in a variety of applications, including road, railway, airfield and industry yard compaction. The 50-mm drum delivers compaction performance up to 15 percent greater than competitive models. The eccentric vibe pod design extends system life by up to 50 percent, with a sealed gear that eliminates contamination and prolongs bearing life. The electronically controlled transmission is easier to shift, reducing operating fatigue, improving efficiency and delivering high reliability.

Reliability is further enhanced by a three-level alarm system that diagnoses issues and notifies the operator with indicator lights and audio alarms.



SEM518/520/522

Soil Compactor



※ Featured machines in photos may include optional equipment

SEM518
SEM520
SEM522

- **High Efficiency:** The unique vibratory pod design along with 50 mm thick drum provides superior compaction performance
- **Reliability:** Vibration system utilizes eccentric vibe pod design, extends life over 50%
- **Operation:** Digital frequency meter and three level alarm system monitor machine performance

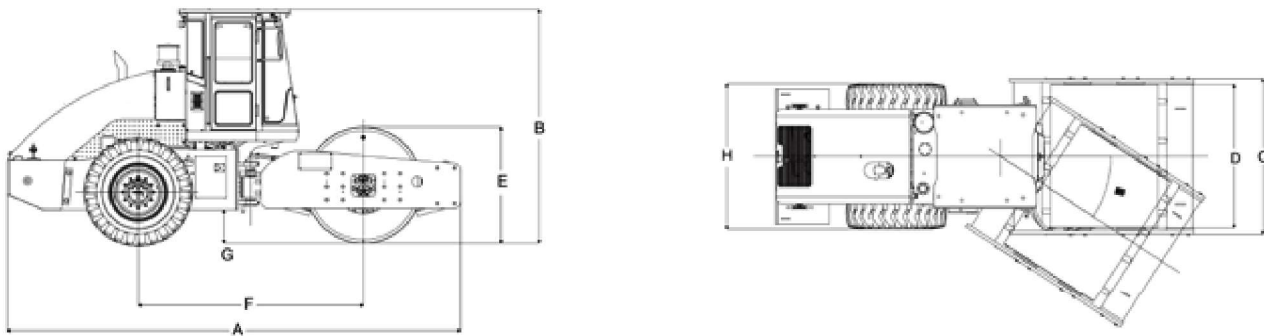


Website <http://www.semmachinery.com>

Specifications

Model	SEM518	SEM520	SEM522
Operating Weight	18000kg	20000kg	22000kg
Compaction			
Vibration Frequency (High/Low)	30/28Hz	30/28Hz	30/28Hz
Amplitude (High/Low)	2/1mm	2/1mm	2/1mm
Excitation Force (High/Low)	327/188KN	360/208KN	374/215KN
Static Pressure	415N/cm	461N/cm	507N/cm
Engine			
Rated Power	129kw	129kw	140kw
Speed	2000r/min	2000r/min	2000r/min
Fuel Tank Volume	262L	262L	262L
Hydraulic Oil Tank Volume	80L	80L	80L
Drum			
Drum Width	2130mm	2130mm	2130mm
Drum Diameter	1600mm	1600mm	1600mm
Drum Thickness	40mm	50mm	50mm
Tires			
Tires Type	20.5-25	20.5-25	20.5-25
Speed			
F/R I	2.98km/h	2.98km/h	2.98km/h
F/R II	5.88km/h	5.88km/h	5.88km/h
F/R III	9.60km/h	9.60km/h	9.60km/h
Swing Angle	±12°	±12°	±12°
Steering Angle	±33°	±33°	±33°
Outer Turning Radius	6350mm	6350mm	6350mm
Max. Gradeability	34%	34%	34%

Dimensions



Size	A	B	C	D	E	F	G	H	β
SEM518	6,250	3,200	2,310	2,130	1,600	3,100	460	2,160	33°
SEM520	6,250	3,200	2,310	2,130	1,600	3,100	460	2,160	33°
SEM522	6,250	3,200	2,310	2,130	1,600	3,100	460	2,160	33°
The swing angle of the front and rear frame ±12°									

Caterpillar (Qingzhou) Ltd. Address: No.12999 Nanhuan Road,Caterpillar Industrial Park, Qingzhou City,Shandong Province, Zip Code: 262500 P.R.China

© Materials and specifications are subject to change without notice. Featured machines in photos may include optional equipment. See your SEM dealer for available options.

© 2016 Caterpillar (Qingzhou) Ltd. All Rights Reserved. SEM Machinery, SEM, their respective logos, trade dress as well as corporate and product identity used herein, are trademarks of Caterpillar (Qingzhou) Ltd. and may not be used without permission.

Version: September 2016